

How to pair iPAQ Pocket PC with the Bluetooth phone

Overview.

Current guide is created in order to help with connection issues coming during usage of the following products, developed by V-Mobile Software:

- *InstantSMS Sender*
- *Bluetooth Dialer*

Both of the applications are using a virtual COM port driver in order to communicate with the cellular phone. The following document completes simple steps to follow in order to pair your devices properly. This guide was created based on the following hardware:

- *iPAQ 2210 Pocket PC with Widcomm Bluetooth Stack*
- *Nokia 6310i Bluetooth Enabled phone.*

With other environment some menus or screens could be different, but the steps will be the same.

1. Enabling Bluetooth Communication

1.1 Enabling Bluetooth on Pocket PC

1. Go to Today Screen (Start-Today)
2. Locate Bluetooth icon on the bottom right corner of the screen
3. If the Bluetooth icon is white and has an (x) symbol on it then the Bluetooth is off.
If the Bluetooth is off then tap on the Bluetooth icon and open the Bluetooth Menu (Figure 1) and select “Turn Bluetooth ON”.

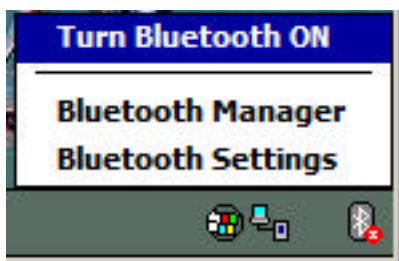


Figure 1.

1.2 Enabling Bluetooth on the phone

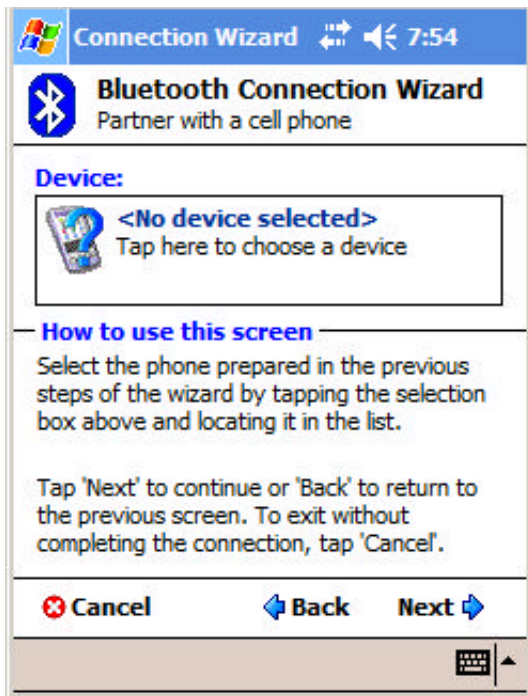
1. Set your phone for Bluetooth use according to User Manual. For example in Nokia 6310i
 - Menu – Bluetooth Settings – My phone’s visibility – menu and check that it is set to “Shown to all” (*Note: For security reasons it is better to change this option to ”Hidden” after you finish with the pairing*) and
 - Then name your phone (Bluetooth – Bluetooth Settings – My phone’s name – menu)
 - After setting name to your phone turn the Bluetooth on (Bluetooth menu’s first menu item)

2. Pairing Pocket PC with the phone

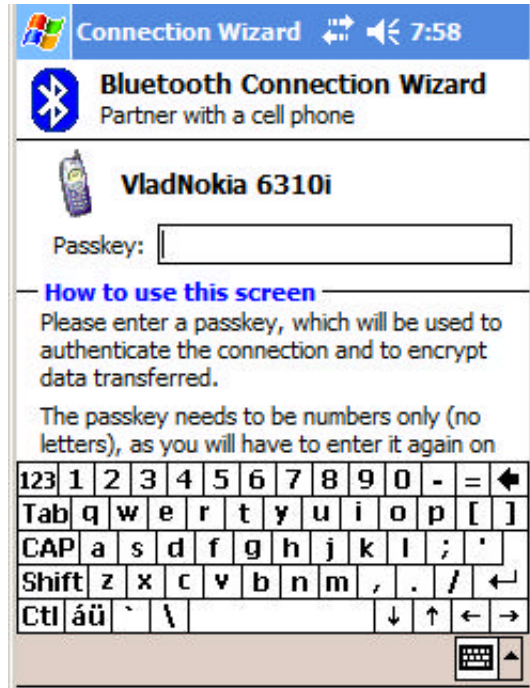
1. Go to Start – Bluetooth manager.
2. Select “New” and “Connect!” You will see the connection wizard as on Figure 2.



3. Select “Pair with a cell phone” option and tap “Next”.
4. Select the phone model if you have your phone listed in the menu, otherwise tap “Next”.
5. Skip the next step since we have already done it and tap “Next”.
6. Tap the device selection box on the following screen.

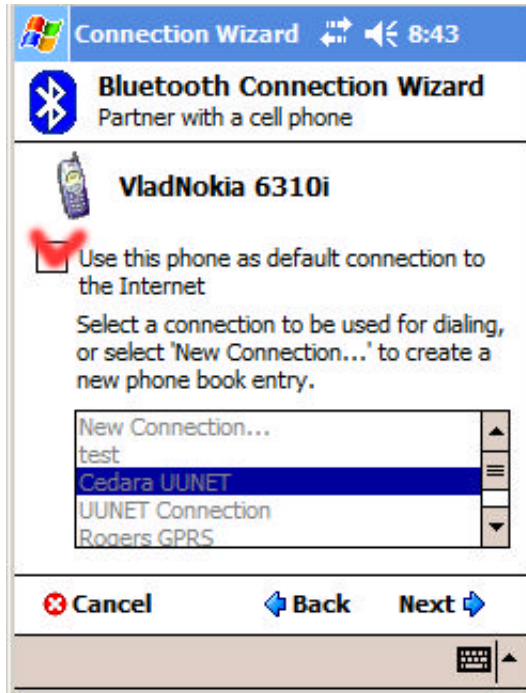


7. Select your phone from the list and you will see the following screen.



8. Enter the numeric passkey, for example “1234”. Note: The same passkey shall be entered on the phone in order to establish pairing.
9. You will be prompted from the phone to accept the connection. Accept the connection and enter the same passkey as Step 8.

10. On the following screen make sure that you check “**Use this phone as default connection to the Internet.**” This is a very important step. If you miss it you have to do pairing from the beginning.



11. Tap “Next” and “Finish” on the next screen.

2.1 Disabling Connection Authorization on the phone.

On order to be able to connect with the phone from Pocket PC without operating the phone you shall disable connection authorization. Refer to your phone’s User Manual.

For example in Nokia 6310i you have to do following steps

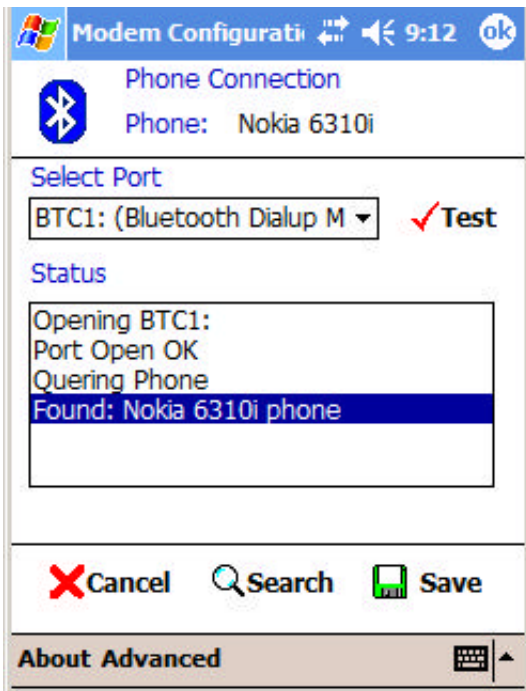
- Menu – Bluetooth Settings – View paired devices – select and select your Pocket PC
- Select Options – Request conn. authorization and select “No”.

3. Running Phone Configuration Utility from V-Mobile Software.

1. Make sure that you do not have any Bluetooth devices connected to your phone.
2. Go to Start – Programs and find the “VM Software Config” icon.



3. Launch the application and select the port number created for Bluetooth Dialup modem. For the iPAQ models with built in Bluetooth it is always the “BTC1:” port. For other models this port may be different, for example “DUN1:”
4. Tap “Test” icon and you shall see the following screen.



5. If you do not see any errors tap “Save” and you can start using phone applications from V-Mobile Software.
6. If you get an error, try to use an automatic search by taping “Search” icon. See the troubleshooting section you still cannot get the connection.

4. Troubleshooting

If you still cannot connect to the COM port, try to delete all pairing with the phones you have and start over again. Some Pocket PC models require the 3rd party drivers in order to create a virtual COM port. For more details please visit the technical support forums at:

<http://www.vmobilesoftware.com/support.htm>